

THE EFFECTIVENESS OF MONETARY POLICY RECONSIDERED

John Weeks

Professor Emeritus,
School of Oriental and African Studies

Technical Paper

Copyright© 2008

**International Poverty Centre
United Nations Development Programme**

International Poverty Centre
SBS – Ed. BNDES, 10º andar
70076 900 Brasilia DF
Brazil

povertycentre@undp-povertycentre.org
www.undp-povertycentre.org
Telephone +55 61 2105 5000
Fax +55 61 2105 5001

The International Poverty Centre is jointly supported by the Brazilian Institute for Applied Economic Research (IPEA) and the Bureau for Development Policy, United Nations Development Programme, New York.

Rights and Permissions

All rights reserved.

The text and data in this publication may be reproduced as long as the source is cited.
Reproductions for commercial purposes are forbidden.

The International Poverty Centre's Technical Papers are technical background papers that support the Centre's applied research in a major area. The papers are signed by the authors and should be cited and referred to accordingly. The findings, interpretations, and conclusions expressed in this paper are entirely those of the authors. They do not necessarily represent the views of the International Poverty Centre, IPEA or the United Nations Development Programme (or its Administrator, Directors, or the countries they represent).

Technical Papers are available online at <http://www.undp-povertycentre.org> and subscriptions can be requested by email to povertycentre@undp-povertycentre.org

THE EFFECTIVENESS OF MONETARY POLICY RECONSIDERED *

John Weeks**

ABSTRACT

This paper inspects the standard policy rule that under a flexible exchange rate regime with perfectly elastic capital flows monetary policy is effective and fiscal policy is not. The logical validity of the statement requires that the domestic price level effect of devaluation be ignored. The price level effect is noted in some textbooks, but not analysed. When it is subjected to a rigorous analysis, the interaction between exchange rate changes and domestic price level changes render the standard statement false.

The logically correct statement would be, under a flexible exchange rate regime with perfectly elastic capital flows the effectiveness of monetary policy depends on the values of the import share and the sum of the trade elasticities. Monetary policy will be more effective than fiscal policy if and only if the sum of the trade elasticities exceeds the import share. Inspection of data from developing countries indicates a low effectiveness of monetary policy under flexible exchange rates.

In the more general case of less than perfectly elastic capital flows, the conditions for monetary policy to be more effective than fiscal policy are even more restrictive. Use of empirical evidence on trade shares and interest rate differentials suggest that for most countries fiscal policy would prove more effective than monetary policy under a flexible exchange rate regime. In any case, the general theoretical assertion that monetary policy is more effective is incorrect. The results sustain the standard Keynesian conclusion that fiscal policy is more effective, whether the exchange rate is fixed or flexible.

1 BACKGROUND

The keystone of open economy macroeconomics is the Mundell-Fleming model (MF model), now approaching its fiftieth birthday.¹ The model provided a simple and apparently consistent method of integrating the exchange rate into a multi-market equilibrium analysis, which could be presented as an extension of the IS-LM model developed a generation earlier by Hicks and others.² The Mundell and Fleming model seemed to transform the neoclassical synthesis Keynesian framework, from a closed to an open economy model that generated powerful policy rules that can be found in textbooks a half century later. A commonly used textbook summarises the importance of the model:

* The author wishes to thank Philip Arestis of Cambridge University, Alemayehu Geda of Addis Ababa University, Alex Izurieta of the United Nations Department of Economic and Social Affairs, Anwar Sheikh and Duncan Foley of the New School University, Olav Lindstol of the Embassy of Norway in Zambia, Jan Toporowski and Alfredo Saad Filho of the School of Oriental and African Studies, and Sedat Aybar of Kadir Has University for their comments.

** Professor Emeritus, School of Oriental and African Studies.

Since the early 1960s, the dominant policy paradigm for studying open-economy monetary and fiscal policy issues has been the Keynesian framework developed by Mundell and Fleming. (Obstfeld & Rogoff 1996, 609)³

While Keynesian in structure with its use of IS and LM schedules, the Mundell-Fleming model carried a non-Keynesian lesson for a flexible exchange rate regime, that monetary policy is effective and fiscal policy is not.⁴ The reasoning goes as follows: with perfectly elastic capital flows, beginning from balanced trade and a position of less than full employment, an increase in the money supply increases output which generates a trade deficit; the trade deficit is instantaneously eliminated by depreciation of the exchange rate, which via exports and imports generates the effective demand to bring an equilibrium in product and money markets. In contrast, an increase in government expenditure instantaneously places upward pressure on the domestic interest rate, which results in an appreciation of the currency to cancel the fiscal expansion.⁵ While these two conclusions are based on the extreme assumption of perfect capital flows, it is typical to present them as the general lesson: fiscal policy is effective with a fixed exchange rate and ineffective with a flexible rate, and the opposite holds for monetary policy.⁶

With the collapse of the IMF-monitored system of fixed exchange rates in the early 1970s, the conclusion that monetary policy is effective and fiscal policy impotent passed from theoretical curiosity to practical importance. It seemed to counsel that active fiscal policy, like fixed exchange rates, was an anachronism.⁷ However, the Mundell-Fleming analysis of a flexible exchange rate regime would appear to ignore an obvious, simple and fundamental economic relationship, the impact of depreciation and appreciation on the price level.⁸ A logically complete story of a monetary expansion would be: an increase in the money supply results in a trade deficit; with perfect capital flow this deficit is instantaneously eliminated by depreciation of the currency; the depreciation of the currency raises the price level via its impact on imported goods;⁹ and this price increase lowers the real money supply; therefore, the outward shift of the LM curve is less than what would be implied by the increase in the nominal money supply. Thus, monetary policy would not be completely effective because the real money supply increases less than the nominal.

Some might argue that Mundell-Fleming is a “fixed price” model,¹⁰ and to raise the exchange rate effect on prices is not obeying the rules of the model. This argument is not correct. The comparative statics of the MF model require a change in a price, the exchange rate; so by its own formulation it cannot be fixed price in character. Further, the model has no mechanism by which the price effect of a change in the exchange rate would be exactly compensated by a change in non-import prices in the opposite direction. Further still, the trade adjustment required for equilibrium requires a change in relative prices to make tradables more profitable. The initial level of income would be the only possible equilibrium if the model were fixed-price because no relative price change would occur.

Second, an empirical argument could be made that domestic prices in practice adjust slowly, so that the price level effect of changes in the exchange rate can be ignored in the short run. This argument would be a refutation of the conclusions of the model, because in the absence of immediate relative price changes the necessary adjustment in exports and imports would not occur. Finally, it might be asserted that the Mundell-Fleming model refers to a chronological “long run”, not to short run adjustment. Like the first two, this argument cannot

eliminate the need to consider price effects; it makes that need all the greater. The first implication of the “long run” argument is that the model has little policy importance, because an unsustainable balance of payments must be resolved in the short run. The second implication is that in the “long run” all variables must adjust, and the price level is one of these.

We proceed to consider the price effects of exchange rate adjustment, because these cannot be ignored if the MF model would have internal consistency. In what follows, the price level effects are first considered graphically (Section 2), then algebraically (Section 3), after which statistics are used to assess the likely magnitude of these effects in developing countries. The final section draws policy conclusions which prove substantially different from standard presentations. The discussion is carried out according to the analytical rules of the model, and its static character is accepted without criticism for sake of presentation.

2 MF AND FLEXIBLE EXCHANGE RATES: DIAGRAMMATIC ANALYSIS

We begin with a definition of the “effectiveness” of monetary policy. Define $\mathcal{E}_{y,m}$ as the elasticity of output with respect to changes in the money supply, and its maximum value is unity if there are unutilised resources and the price level were constant. This we shall call the “the index of effectiveness of monetary policy”, or “effectiveness index”. The maximum value of the index would be unity if the economy is not resource constrained and prices were constant; i.e., in a fixed-price closed economy.

In an open economy with perfectly elastic capital flows and a flexible exchange rate, an increase in the nominal money supply ($+\Delta M$) shifts the LM curve to the right, which causes devaluation of the currency. If markets are competitive, devaluation must lead to a rise in prices of imported goods, which reduces the real money supply, where $[-\Delta m] = -[\Delta M/\Delta P]$. This lowers the potential increase in output sought by the initial increment in the nominal money supply, and the effectiveness of monetary policy is less than unity. If capital flows are not perfectly elastic with respect to the difference between external and internal interest rates, the effectiveness index is further reduced.

Figure 1 shows the case of perfectly elastic capital flows. From an initial equilibrium at e_1 given by the IS and LM schedules (IS_1 and LM_1), if the nominal money supply increases by x percent and prices were constant, then output increases by the same percentage, shown as equilibrium point e^* (IS^* and LM^*), further out the balance of payments' schedule (BP). This is the standard analysis found in textbooks. However, in general the domestic price level will rise as a result of the devaluation, which lowers the real money supply, which will reduce the rightward shift of both the LM and IS schedules. The new equilibrium will be a point such as e_2 (for IS_2 and LM_2).

Figure 2 shows the case of less than perfectly elastic flows. Point e^* is as before, an equilibrium with a horizontal BP schedule. Since the BP curve now has a positive slope, the constant price equilibrium as a result of a given percentage increase in the nominal money supply must correspond to a higher domestic interest rate and lower level of output than e^* . Again, devaluation increases the domestic price level and lowers the real money supply, so the final equilibrium is at a point such as e_2 . The diagram shows that the impact on the effectiveness index has two parts, an interest rate effect and a real money supply effect.

In both diagrams, the effectiveness index can be expressed as follows:

$$\epsilon_{y,m} = [Y^* - Y_2]/Y_2$$

FIGURE 1

Monetary Policy, Flexible Exchange Rate and Perfectly Elastic Capital Flows

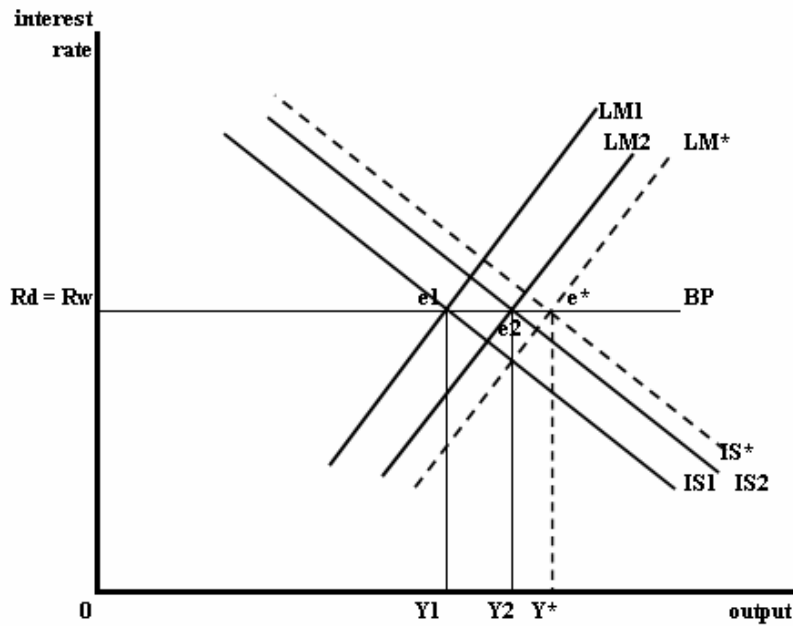
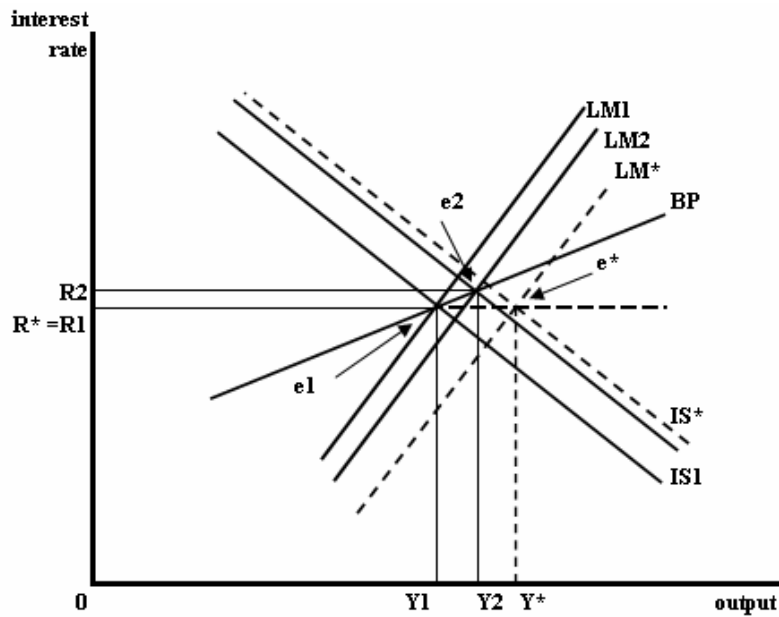


FIGURE 2

Monetary Policy, Flexible Exchange Rate and Less than Perfectly Elastic Capital Flows



To summarise the effects in words, if capital flows are less than perfectly elastic, an increase in the money supply: 1) via devaluation increases the price level, reducing the expansionary effect of the nominal money increase; and 2) via the IS curve the expansion raises the domestic interest rate, and both lower the effectiveness of monetary expansion to increase output. The interactions among the three schedules as a result of devaluation are so complex that it is not possible to assess the quantitative importance of the price level effect of exchange rate changes from the diagrams. Rigorous investigation of the impact requires a formal model. In this context, it is instructive to note that no standard macro textbook presents the Mundell-Fleming model in algebra, but confine themselves to diagrams.¹¹ A student who attempts to specify the model in algebra, with or without success, will teach her- or himself considerably more about the interactions of markets than could ever be learned from the IS-LM-BP framework.

Prior to the algebra, several points can anticipate the analysis. First, the larger the share of imports in GDP, the larger will be the price impact of an exchange rate change, and the less effective will be monetary policy. Second, the more elastic are imports and exports with respect to the exchange rate, the smaller will be the devaluation required to equilibrate the balance of payments, increasing the effectiveness of monetary policy. Thus, the standard Mundell-Fleming presentation with no price effect implicitly assumes that imports are a small share of national income and imports and exports are infinitely elastic with respect to the exchange rate *in the short run*. Third, if capital flows are less than perfectly elastic, the more elastic private investment is with respect to the interest rate the less effective will be monetary policy. This mechanism operates via the IS schedule. When the interest rate rises, the outward shift of the IS schedule as a result of devaluation affecting trade flows will be countered by a fall in investment. Fourth, because no equilibrium is possible to the right of the BP schedule, *ceteris paribus*, the less interest rate elastic is that schedule, the less effective is monetary policy.

It should be intuitively obvious that the effectiveness of fiscal policy is the converse of the effectiveness of monetary policy. That is, under a flexible exchange rate, the price effect of devaluation makes fiscal policy effective by the same degree it renders monetary policy ineffective.

3 MF AND FLEXIBLE EXCHANGE RATES: THE ALGEBRA AND ITS IMPLICATIONS

To investigate interaction of the exchange rate and monetary policy, we consider the “small country” case, in which the country’s demand for imports and supply of exports do not affect world prices.¹² A change in the nominal exchange rate affects only internal prices, altering the profitability of traded goods relatively to domestic goods. The balance of payments schedule (BP) is defined by the following equation:

$$1) \quad 0 = (X - N) + F, \text{ and} \\ (N - X) = F$$

Because of the small country assumption, we can measure exports (X), imports (N) in constant price units,¹³ and measure capital flows in constant prices. The standard behavioural assumptions are made for exports and imports. The former is determined

by the real exchange rate, and the latter by the real exchange rate and the level of real output. The following explicit functions are assumed:

$$1.1) \quad 0 = (X' + a_1 E^*) - (a_2 E^* + a_3 Y) + a_4 (R_D - R_W)$$

Real output is Y , and E^* is the real exchange rate (E/P) measured in units of the domestic currency to some composite world currency. The domestic interest rate is R_D and the “world” rate R_W . With R_W constant and X' a parameter, the total derivative is:

$$1.2) \quad 0 = (a_1 - a_2)dE^* - a_3dY + a_4dR_D$$

If capital flows are perfectly elastic, $R_D = R_W$, and the final term is zero. The exchange rate is defined as units of the national currency to the “world currency”, so $a_1 > 0$ and $a_2 < 0$. The marginal propensity to import is assumed equal to the average ($a_3 = APN$). If the total differential of equation 1.1 is solved for the rate of growth of output, one obtains the following, where y , e and r are the rates of change of the upper case variables.¹⁴

$$1.3) \quad y = (a_5 \varepsilon_1 - \varepsilon_2)e^* - (1 - a_5) \varepsilon_4 r$$

Where $X = a_5 N$, $a_5 = X/N$, $F = (N - X) = (1 - a_5)N$; and $\varepsilon_3 = 1$. ε_4 is the elasticity of capital flow with respect to the domestic interest rate.

The ε 's are elasticities corresponding to the numbered parameters. Since $MPN = APN$, $\varepsilon_3 = 1$. If capital flows are perfectly elastic, $a_5 = 1$, $(1 - a_5) = 0$, and the equation reduces to $y = (\varepsilon_1 - \varepsilon_2)e$, with $\varepsilon_1 > 0$ and $\varepsilon_2 < 0$, and their sum is always positive. The small country assumption ensures that the Marshall-Lerner condition is met ($\varepsilon_1 - \varepsilon_2 > 0$), if the elasticities are not zero.¹⁵ When output is not capacity constrained, its growth rate is determined by the proportional change in the exchange rate and the sum of the trade elasticities. Define $(a_5 \varepsilon_1 - \varepsilon_2) = \varepsilon_T^*$, where $\varepsilon_T^* = \varepsilon_T$ if $a_5 = 1$ (capital flows are perfectly elastic). In the case of perfect elasticity the relationship between changes in the exchange rate and output becomes quite simple:

$$1.4) \quad y = \varepsilon_T^* e^* = \varepsilon_T e^* \text{ (perfect capital flows)}$$

By definition in a one commodity model, the rate of change of the real exchange rate is the rate of change of the nominal rate minus the rate of inflation. If the prices of domestic goods are constant and the market for imports competitive, then the rate of inflation (p) is the change in the nominal exchange rate times the import share.¹⁶

$$1.5) \quad y = \varepsilon_T^* e^* = \varepsilon_T (e - p) = \varepsilon_T (e - a_3 e) = \varepsilon_T (1 - a_3) e$$

To investigate monetary policy it is necessary to include money in equation 1.5. Let the demand and supply for money be:

$$2) \quad M_D = vPY + a_6 R$$

$$M_S = M^*$$

$$M_S = vPY + a_6 R$$

Where P is the price level, M^* is the nominal money supply, v is the velocity of money, and a_3 is the derivative of money demand with respect to the domestic interest rate. From equation 2 it follows that if the velocity of money and the interest rate are constant, the inflation rate is

$$\begin{aligned} 2.3) \quad p &= m - y \\ a_3 e &= m - y \\ e &= (m - y)/a_3 \end{aligned}$$

We can now substitute for e in equation 1.5:

$$2.4) \quad y = \varepsilon_T^* [1 - a_3] [(m - y)/a_3]$$

Again, we solve for y ,

$$2.5) \quad y = \varepsilon_T [(1 - a_3)/(a_3 + \varepsilon_T)] m$$

By dividing through by m one obtains the index of effectiveness of monetary policy:

$$3) \quad \varepsilon_{y,m} = \varepsilon_T [1 - a_3]/[a_3 + \varepsilon_T]$$

From equation 3 it is immediately obvious that the effectiveness of monetary policy declines as the import share rises (a_3) and the trade elasticities decline (ε_T). The larger is the former, the greater will be the price impact of a given devaluation. The lower is the latter, the larger must be the devaluation in order to maintain the balance between imports and exports.

Equation 3 can be adapted to the case when capital flows are less than perfectly elastic. As Figure 2 shows, the slope of the BP curve affects the effectiveness of monetary policy, and that slope is given by the ratio of R_w to R_d . Therefore, the effectiveness of monetary policy in the general case is given by:

$$4) \quad \varepsilon_{y,m} = \varepsilon_T^* [(1 - a_3)/(a_3 + \varepsilon_T^*)] [R_w/R_d]$$

$$0 \leq [R_w/R_d] \leq 1 \text{ in general, and } R_w/R_d = 1 \text{ for perfect elasticity.}$$

The equation is algebraically and analytically composed of three components:

- 1) $(1 - a_3)$, the difference between the changes in the nominal and real exchange rates;
- 2) $\varepsilon_T^* (1 - a_3)/(a_3 + \varepsilon_T^*)$, the difference between the nominal and real change in the money supply; and
- 3) R_w/R_d , the interest rate differential.

For a given import share, the first component is invariant, and reduces the effectiveness of monetary policy by the same degree independently of the value of the trade elasticities or the elasticity of capital flows. The second increases with the sum of the trade elasticities, approaching infinity as its limit. And the third approaches unity as its limit. In the following section this equation is applied to empirical evidence.

3 EMPIRICAL RELEVANCE

Despite a policy apparent consensus on floating exchange rates, the IMF in 2004 placed only thirty-six of 187 countries in the category of a “free” float, and nine of these were developed countries. Less than one in five developing country governments pursued a floating exchange rate regime without frequent interventions.¹⁷ This is not entirely surprising, since the institutional characteristics of developing countries suggest that the appropriate conclusion to draw from Mundell-Fleming analysis is that monetary policy would be *ineffective* under a flexible exchange rate. This is because of the probable values of the three key parameters determining monetary effectiveness: import shares in GDP, the trade elasticities, and the elasticity of capital flows with respect to interest rate differentials.

The marginal and average propensities to import in developing countries are quite high, as Figure 4 shows. Of 129 developing countries, excluding city states and small island republics, the median import share during the first half of the 2000s was over forty percent, and thirty-seven percent of countries had shares in excess of one-half. The relationship between import shares and the relative effectiveness of monetary policy is determined by the sum of the trade elasticities. Under a flexible exchange rate, monetary and fiscal policy will be equally effective when

$$\varepsilon_T = .5 a_3 / (.5 - a_3),$$

and fiscal policy the more effective instrument if

$$\varepsilon_T < .5 a_3 / (.5 - a_3).$$

In the special case of perfect capital flows, if the maximum realistic value of the sum of the trade elasticities were judged to be unity, then in no country with an import share greater than one-third of GDP would monetary policy be the more effective instrument. If the maximum realistic value were judged to be .5, monetary policy would be less effective for all countries with trade shares greater than one-quarter. The relationship between the import share (N/Y) and the sum of trade elasticities is shown in Figure 4 for three values of the former parameter and various trade elasticities.

If we assume perfect capital flows, only two parameters are relevant as in Figure 4, the import share, which is available from many data bases, and the sum of trade elasticities. The value of the latter depends critically on the time period over which it is measured (Pikoulakis 1995, 9-13). Assuming perfect capital flows, the rapidity with which a trade deficit would need to be closed would depend primarily on the foreign exchange reserves held by a country’s central bank. According to World Bank and IMF statistics average *gross* reserves in the early

2000s for the major developing regions varied from below three months of imports for sub-Saharan Africa to about six months for middle income Asian countries (World Bank 2006). One can conclude that the Mundell-Fleming trade adjustment mechanism would need to be realised in less than a year.

The trade elasticities tend to be quite small over such a short time. For countries that are primarily exporters of agricultural products, the elasticity of export volume with respect to the exchange rate may not be significantly different from zero. This would be the case for most sub-Saharan countries and some low income Asian countries. Exporters of manufactures could have positive export elasticities, especially if producers hold inventories. On the import side, the exchange rate elasticity will be determined by the degree to which there are domestic substitutes. As for exports, this elasticity is likely to be small in the short run in low income countries, especially in the sub-Saharan region where production of intermediate and capital goods, and many consumer goods, is quite limited. It would seem realistic to assume that the sum of the trade elasticities would be positive but less than unity for most countries, and considerably less for the sub-Saharan region.

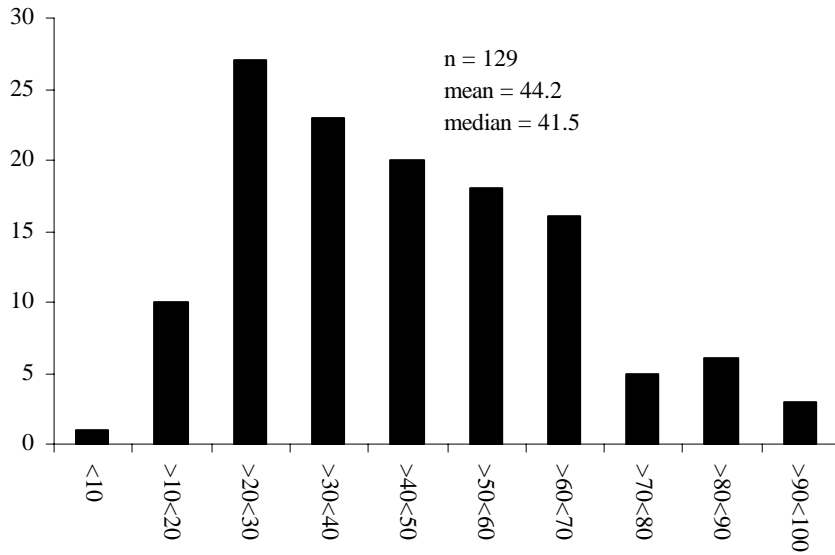
Having established the high probability that monetary would be less effective than fiscal policy for a large number of developing countries when capital flows are perfectly elastic, the less than perfectly elastic outcome can be considered. In this case, the slope of the BP schedule is added to the import share and trade elasticities in determining effectiveness.

Table 1 provides the data on twenty-one developing countries to assess the case of flexible exchange rate with imperfect capital flows. The London Inter-bank Offer Rate (LIBOR) is used as the "world" rate of interest (R_w) and the central bank thirty day bond rate for the domestic rate of interest in each country (R_d). Data column 1 reports the average of these for 2001-2005, and the next four columns the ratio R_d/R_w , the export share in GDP (X/GDP), the import share (N/GDP) and the ratio of exports to imports (X/N). The last parameter is used to calculate ε_T^* in the case of imperfect capital flows. Column 2, the ratio of the LIBOR to the central bank rate suggests a low degree of capital mobility in some countries as suggested by various authors (see Willet, Keil and Young 2002). The final four columns report the calculated effectiveness of monetary policy. For comparison Table 1 and Figures 5 and 6 provide the calculations for the perfect capital flows case as well as the more general case, both for hypothetical sums of the trade elasticities of .5 and 1.0.

For the lower, and more realistic for the short run, sum of trade elasticities the average effectiveness of monetary policy across the twenty-one countries for perfect capital flows is .46, and for fifteen of the countries fiscal policy would be the more effective instrument. For the case of imperfect capital flows, the average effectiveness of monetary policy falls to .15, and fiscal policy would be more effective in every country. When the sum of trade elasticities rises to unity, monetary policy is more effective in seventeen under perfect capital flows, with no country achieving the seventy-five percent effectiveness level. For the case of imperfect capital flows, monetary policy is more effective in no country, and less than twenty-five percent effective in sixteen of the twenty-one.

FIGURE 3

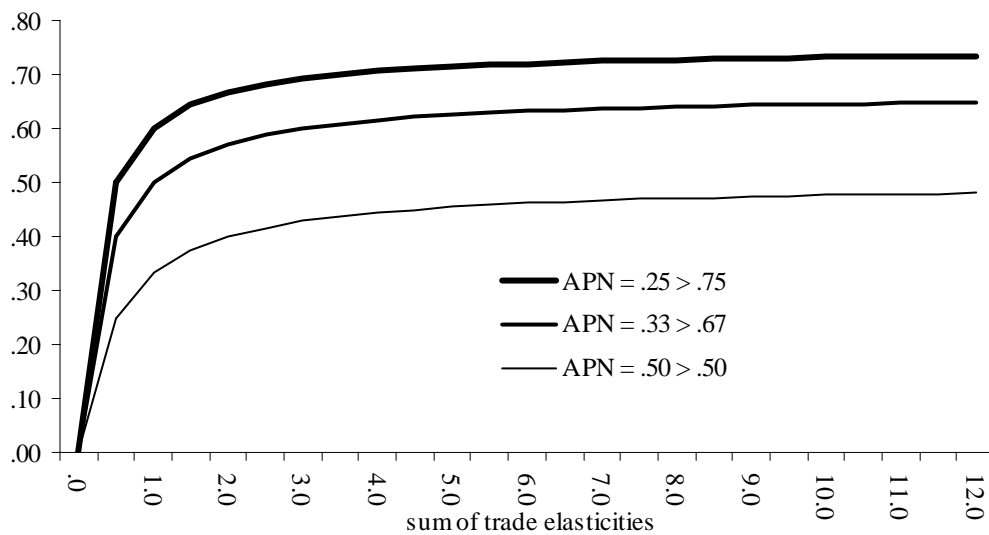
**Distribution of Import Shares in GDP for 129 Developing Countries, early 2000s
(Number of Countries by Range)**



Source: World Development Indicators 2006.

FIGURE 4

**Effectiveness of Monetary Policy (vertical axis) for Different Values of Trade Elasticities
(Horizontal axis), with Different Import Shares (Flexible Exchange Rate with Perfectly Elastic
Capital Flows)**



Note: "Trade elasticities" are the sum of the export and import elasticities with respect to the real exchange rate. N is imports and Y is national income, measured in constant price units. The legend gives the average propensity to import (APN) and the limiting value of the effectiveness of monetary policy as the sum of the trade elasticities approaches infinity.

TABLE 1

Calculation of Effectiveness of Monetary Policy (Using 2001-2005 Data)

Libor & by Countries	Interest Rates					Effectiveness of Monetary Policy			
	(Average)	Key	Ratios			Perfect Capital Flows		Imperfect Capital Flows	
			R_D/R_W	X/GDP	N/GDP	X/N	$\epsilon_1+\epsilon_2 =$	$\epsilon_1+\epsilon_2 =$	$\epsilon_1+\epsilon_2 =$
Libor = R_W	<u>3.1</u>					0.5	1.0	0.5	1.0
Argentina	9.6	3.13	.23	.15	1.53	.65	.74	.22	.24
Bolivia	9.2	5.88	.26	.27	.96	.47	.57	.08	.10
Brazil	18.5	5.88	.14	.13	1.11	.69	.77	.12	.13
Chile	4.7	1.54	.37	.33	1.12	.40	.50	.27	.33
Colombia	9.6	3.13	.20	.22	.91	.54	.64	.17	.20
Ecuador	5.9	1.92	.27	.30	.90	.44	.54	.22	.28
Mexico	9.2	3.03	.29	.31	.94	.43	.53	.14	.17
Peru	6.9	2.22	.19	.18	1.06	.60	.69	.27	.31
Uruguay	22.8	7.69	.25	.25	1.00	.50	.60	.07	.08
Indonesia	12.5	4.17	.33	.25	1.32	.50	.60	.13	.15
Korea	4.4	1.43	.39	.31	1.26	.43	.53	.31	.38
Malaysia	3.0	1.00	1.16	.96	1.21	.01	.02	.01	.02
Philippines	7.7	2.50	.50	.53	.94	.23	.31	.09	.12
Bangladesh	5.6	1.82	.15	.21	.71	.56	.65	.29	.35
India	6.0	3.70	.16	.18	.89	.60	.69	.16	.18
Sri Lanka	7.9	5.88	.36	.44	.82	.30	.39	.05	.06
Egypt	8.8	2.86	.23	.28	.82	.46	.56	.15	.19
Kenya	7.7	2.50	.25	.31	.81	.43	.53	.16	.20
South Africa	9.5	3.13	.29	.28	1.04	.46	.56	.15	.18
Zambia	10.9	3.57	.22	.29	.76	.45	.55	.12	.15
Turkey	<u>41.0</u>	14.29	<u>.29</u>	<u>.34</u>	<u>.85</u>	<u>.39</u>	<u>.49</u>	<u>.03</u>	<u>.04</u>
Averages	10.55	3.13	.31	.31	.99	.45	.55	.15	.18

Notes: Effectiveness of monetary policy is calculated by the equation

$$\epsilon_{y,m} = \epsilon_T^* / [a_3 + \epsilon_T^*] [R_W/R_D]$$

Where $\epsilon_T^* = (a_5 \epsilon_1 + \epsilon_2)$, and ϵ_1 and ϵ_2 are the elasticities of export and import volume with respect to the exchange rate, and a_5 the ratio of exports to imports. The calculations assume $\epsilon_1 = \epsilon_2$. R_D is the central bank thirty day bond rate in each country and R_W is the London inter-bank offer rate (LIBOR). The national rates are taken from the central bank websites for each country. Libor is from <http://www.economagic.com/em-cgi/data.exe/libor/day-us3m>. Source for the trade ratios is: <http://ddp-ext.worldbank.org/ext/DDPQQ/member.do?method=getMembers&userid=1&queryId=135>.

FIGURE 5

**Calculated Effectiveness of Monetary Policy in 21 Countries, $\epsilon_T^* = 0.5$
(Using 2001-2005 Data for N/GDP, X/GDP and R_D/R_W)**

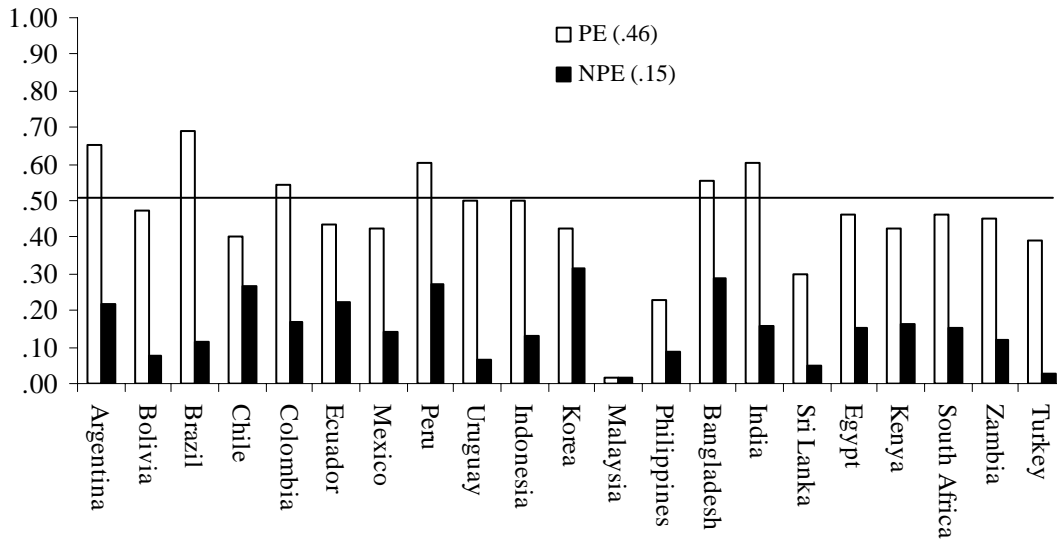
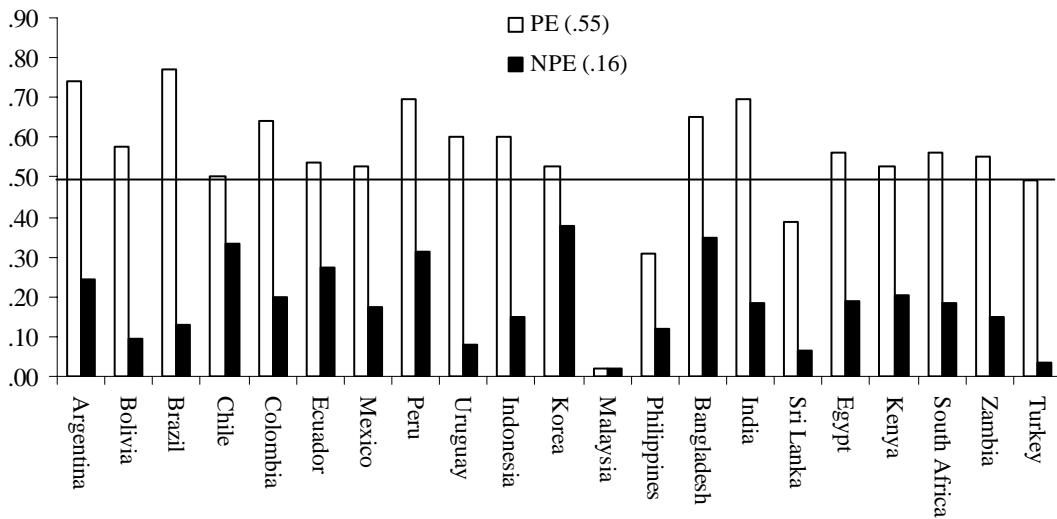


FIGURE 6

**Calculated Effectiveness of Monetary Policy in 21 Countries, $\epsilon_T^* = 1.0$
(Using 2001-2005 Data for N/GDP, X/GDP and R_D/R_W)**



Notes for Figures 3 and 4: PE is the result assuming perfectly elastic capital flows, and NPE uses the actual trade balance and actual R_W/R_D . R_D is the central bank 30 day bond rate in each country and R_W is the London inter-bank offer rate (LIBOR). Numbers in parenthesis are cross-country averages. Calculation of ϵ_T^* explained in the text and the notes to Table 1.

4 CONCLUDING REMARKS

A major argument in favour of monetary policy is that whether policy makers like it or not, governments operate in a world of flexible exchange rates. Therefore, fiscal policy is ineffective as a tool of demand management, while monetary policy is effective. This paper has shown that even in the case perfect capital flows, both conclusions are partly wrong. With imperfect capital flows they both can be false. This is because of the difference between the nominal and real values of changes in the exchange rate and money supply, aggravated by the difference between world and domestic interest rates.

Empirical evidence on the key determining parameters suggest that under flexible exchange rates the generalisation that monetary policy is more effective than fiscal policy requires the assumption of unrealistically high trade elasticities even in the case of perfect capital flows. In the general case of imperfectly elastic capital flows, the probability that monetary policy would be as effective as fiscal policy under flexible exchanges is quite low.

The impact on domestic prices exchange rate is theoretically beyond challenge and empirically verified. It is implied by the exchange rate itself. The necessity to incorporate the price effect of the exchange rate means that the logically valid formulation of the policy rule for a flexible exchange rate regime would be, "under flexible exchange rates the effectiveness of fiscal or monetary policy depends on the import share, the trade elasticities and the degree of capital mobility". In other words, when formulated with theoretical consistency, the Mundell-Fleming framework demonstrates there can be no specification of an open economy model yielding the general conclusion that monetary policy is effective. It is not that the standard presentation of the MF theoretical analysis of flexible exchange rates is incorrect under particular assumptions, or that it is correct in theory but irrelevant in practice; it is incorrect in theory.

REFERENCES

- Agenor, P. & Montiel, P. J. (1996). *Development Macroeconomics*, Princeton, Princeton University Press.
- Chacholiades, M. (1981). *Principles of International Economics*, New York, McGraw-Hill.
- Darity, W. & Young, W. (2004) 'IS-LM-BP: An inquest', *History of Political Economy*, 36: 127-164.
- Dornbush, R., Fischer, D. S. & Startz, R. *Macroeconomics*, New York, McGraw-Hill.
- Dunn, R. jr & Mutti, J.H. (2004). *International Economics*, 6th Edition, New York, Routledge
- Fleming, M. (1962) 'Domestic Financial Policies under Fixed and under Floating Exchange Rates', *International Monetary Fund Staff Papers* 9.
- Hansen, A. (1949). *Monetary Theory and Fiscal Policy*, New York, McGraw-Hill.
- Hicks, J. (1937). 'Mr. Keynes and the 'Classics': A suggested interpretation', *Econometrica* 5, 2: 147-159.
- Kenen, P. (1994). *The International Economy*, Cambridge, Cambridge University Press.
- International Monetary Fund (2004). 'Classification of Exchange Rate Arrangements and Monetary Policy Frameworks', <<http://www.imf.org/external/np/mfd/er/2004/eng/0604.htm>>
- Mundell, R. (1963). '[Capital Mobility and Stabilisation Policy under Fixed and Flexible Exchange Rates](#)', *American Economic Review* 53: 112-119.
- Obstfeld, M. & Rogoff, K. (1996). *Foundations of Macroeconomics*. Cambridge, MIT Press.
- Pikoulakis, E. (1995). *International Macroeconomics*, London, Macmillan.
- Romer, D. (1996). *Advanced Macroeconomics*, New York, McGraw-Hill.
- Shaikh, A. (1999). 'Real Exchange Rates and the International Mobility of Capital', *Working Paper* no. 265, Warren, The Jerome Levy Economics Institute of Bard College.
- Smith. (1956). 'A Graphical Exposition of the Complete Keynesian System', *Southern Economic Journal* 23, 2: 115-125.
- Taylor, L. (2000). '[Exchange rate indeterminacy in portfolio balance, Mundell-Fleming, and uncovered interest rate parity models](#)', *SCEPA Working Papers* 2000-21.
- Van der Ploeg (ed.).(1994). *The Handbook of International Macroeconomics*, Oxford, Basil Blackwell.
- Weeks, J. (1989). *A Critique of Neoclassical Macroeconomics*, London and New York, Macmillan and St Martins.
- Willett, K. & Seok Ahn, Y. (2002). 'Capital Mobility for Developing Countries May Not Be So High', *Journal of Development Economics*, 82, 2: 421-434.
- Williamson, J. & Milner, C. (1991). *The World Economy: A textbook in international economics*, New York, Harvester Wheatsheaf.
- World Bank (2006). 'World Development Indicators', <<http://ddp-ext.worldbank.org/ext/DDPQQ/member.do?method=getMembers&userid=1&queryId=135>>..

NOTES

1. It is difficult to identify the “original” sources, because the model emerged in a series of articles by Fleming and Mundell, and the evolution is discussed in detail in Darity and Young (2004). Representative of the full version of the model are Fleming (1962) and Mundell (1963).

2. The word “synthesis” refers to a putative integration of Keynesian and pre-Keynesian theory. The closed economy IS-LM model is typically attributed to Alvin Hansen (1949) and John Hicks (1937). An alternative graphical approach which presents each market separately is found in Smith (1956).

3. See also Agenor and Montiel, “The most common analytical framework adopted in modeling the production structure in open-economy models of industrial countries is the Mundell-Fleming framework” (Agenor & Montiel 1996, 44).

4. Taylor has persuasively argued that the fixed/flexible dichotomy is invalid in theory and practice (Taylor 2000). This paper accepts the distinction for purposes of inspecting the validity of Mundell-Fleming within the rules of the model.

5. Kenen gives the following summary:

Fiscal and monetary policy under a flexible exchange rate

1. with perfect capital mobility, the effectiveness of monetary policy is maximized, but fiscal policy is deprived of any effect on the domestic economy;

2. as capital mobility falls, the effectiveness of monetary policy diminishes, but its effect on income is always larger than the effect obtained with a pegged exchange rate and complete sterilization;

3. as capital mobility falls, the effectiveness of fiscal policy grows, and its effect on income can be larger than the effect obtained with a pegged exchange rate and complete sterilisation... (Kenen 1994, 379).

Dunn and Mutti provide one of the most complete discussions, considering fiscal expansion with flexible exchange rates for the three possible cases in the Mundell-Fleming model: perfect capital mobility (fiscal policy completely ineffective); when the balance of payments schedule is flatter than the LM schedule (currency appreciates, partially effective); and when the balance of payments schedule is steeper than the LM schedule (currency depreciates, with fiscal policy more effective).

6. For example,

For the sake of simplicity, the theoretical discussion of this chapter assumes a clean float; accordingly, it is assumed that the exchange rate moves sufficiently to maintain equilibrium in the payments accounts. These assumptions permit rather clear distinctions between the workings of a flexible and fixed exchange rate system. The basic conclusions of this theory hold for the real world, though in a less precise way. (Dunn & Mutti 2004, 432, emphasis added)

7. In the 2004 edition of their textbook, Dunn and Mutti wrote, “There is now relatively little serious discussion of abandoning flexible [exchange] rates” (Dunn and Mutti 2004, 431).

8. A typical treatment where price effects are ignored is found in Romer:

...[T]he exchange rate does not affect money demand...

The fact that the LM curve is vertical means that output for a given price level – that is, the position of the AD curve – is determined entirely in the money market... [S]uppose that government purchases rise. This change shifts the IS curve to the right... At a given price level this leads only to appreciation of the exchange rate and has no effect on output. (Romer 1996, 207).

In their introduction to the discussion of flexible exchange rates, Dunn and Milner point out the price effect of exchange rate changes: “Since the exchange rate, rather than the balance of payments, moves constantly, domestic prices of traded goods are affected (Dunn & Milner 2004, 434). On the following and subsequent pages exchange rate changes are analyzed assuming all prices are fixed. For example, they write, “...depreciation also increases domestic prices of tradable goods... *The original increase in the domestic money supply remains intact...*” (*ibid.*, 436, emphasis added).

The same analysis is presented in Dunn and Mutti. However, in they call a “monetarist” the price effect of exchange rate changes renders monetary policy ineffective except in the short run. No comment is made on the implicit contradiction between the standard Mundell-Fleming argument and the “monetarist” though they are presented within a few pages of each other (Dunn & Mutti 2004, 438-440).

9. That this effect is ignored in macro analysis is all the more surprising because it is dealt with in detail in trade theory (for example, see van der Ploeg 1994, 53ff).

10. It is the invalid interpretation of Mundell-Fleming as fixed-price that allows the model to exclude consideration of the *real* exchange rate. I thank Anwar Shaikh for pointing this out to me. His review of the exchange rate literature aided the analysis of this paper (Shaikh 1999).

11. Williamson and Milner begin an algebraic presentation with an open economy national income equilibrium, but do not develop a full model (Williamson & Milner 1996, 244, equation 14.1).

12. Agenor and Montiel call this the “dependent economy” model (1996, 48-52).

13. The constant price unit of measurement requires the assumption that the economy produces only one product.

14. Equation 1.3 is obtained as follows:

$$y = [(a_1 - a_2) / a_3] dE^*/Y - (a_4/a_3) dR_d/Y$$

For the first term, multiply numerator and denominator by E^*/X and substitute $N/a_5 = X$. Since $a_3 = N/Y$, this produces:

$$y = (a_5 \varepsilon_1 - \varepsilon_2) e^* - (a_4/a_3 Y) dR_d$$

For dR_d , multiply numerator and denominator by F/R , substituting $(1-a_3)N = F$. Equation 1.3 is the result.

15. If the sum of the export and import *revenue* elasticities is ε_{TR} , $\varepsilon_T = (\varepsilon_{TR} - 1)$.

16. The price level, P , is equal to the weighted average of domestic prices (P_d) and import prices.

$$P = (1 - a_3)P_d + a_3E$$

When domestic prices are constant and product markets competitive, the rate of change of the price level is the import share in income times the change in the exchange rate (see Agenor and Montiel 1996, 44-45).

$$p = a_3e$$

17. Even this category, "independently floating", allowed for policy intervention: "The exchange rate is market-determined, with any official foreign exchange market intervention aimed at moderating the rate of change and preventing undue fluctuations in the exchange rate, rather than at establishing a level for it" (IMF 2004, 2).



International Poverty Centre

SBS – Ed. BNDES, 10º andar
70076 900 Brasília DF
Brazil

povertycentre@undp-povertycentre.org
www.undp-povertycentre.org
Telephone +55 61 2105 5000
Fax +55 61 2105 5001