

7

DISCUSSION PAPER

Originally published by Ipea in July 1981 as number 34 of the series Texto para Discussão.

INDEXATION, MONETARY ACCOMODATION AND INFLATION IN BRAZIL

Eliana A. Cardoso



Originally published by Ipea in July 1981 as number 34 of the series Texto para Discussão.

Brasília, January 2015

INDEXATION, MONETARY ACCOMODATION AND INFLATION IN BRAZIL

Eliana A. Cardoso

Federal Government of Brazil

**Secretariat of Strategic Affairs of the
Presidency of the Republic**
Minister Roberto Mangabeira Unger



A public foundation affiliated to the Secretariat of Strategic Affairs of the Presidency of the Republic, Ipea provides technical and institutional support to government actions – enabling the formulation of numerous public policies and programs for Brazilian development – and makes research and studies conducted by its staff available to society.

President

Sergei Suarez Dillon Soares

Director of Institutional Development

Luiz Cezar Loureiro de Azeredo

Director of Studies and Policies of the State, Institutions and Democracy

Daniel Ricardo de Castro Cerqueira

Director of Macroeconomic Studies and Policies

Cláudio Hamilton Matos dos Santos

Director of Regional, Urban and Environmental Studies and Policies

Rogério Boueri Miranda

Director of Sectoral Studies and Policies, Innovation, Regulation and Infrastructure

Fernanda De Negri

Director of Social Studies and Policies, Deputy

Carlos Henrique Leite Corseuil

Director of International Studies, Political and Economic Relations

Renato Coelho Baumann das Neves

Chief of Staff

Ruy Silva Pessoa

Chief Press and Communications Officer

João Cláudio Garcia Rodrigues Lima

URL: <http://www.ipea.gov.br>

Ombudsman: <http://www.ipea.gov.br/ouvidoria>

DISCUSSION PAPER

A publication to disseminate the findings of research directly or indirectly conducted by the Institute for Applied Economic Research (Ipea). Due to their relevance, they provide information to specialists and encourage contributions.

© Institute for Applied Economic Research – **ipea** 2015

Discussion paper / Institute for Applied Economic

Research.- Brasília : Rio de Janeiro : Ipea, 1990-

ISSN 1415-4765

1. Brazil. 2. Economic Aspects. 3. Social Aspects.
I. Institute for Applied Economic Research.

CDD 330.908

The authors are exclusively and entirely responsible for the opinions expressed in this volume. These do not necessarily reflect the views of the Institute for Applied Economic Research or of the Secretariat of Strategic Affairs of the Presidency of the Republic.

Reproduction of this text and the data it contains is allowed as long as the source is cited. Reproductions for commercial purposes are prohibited.

TEXTOS PARA DISCUSSÃO INTERNA

Nº 34

"Indexation, Monetary Accomodation and Inflation in Brazil"

Eliana A. Cardoso

Julho de 1981

INDEXATION, MONETARY ACCOMMODATION AND INFLATION IN BRAZIL

Eliana A. Cardoso

INPES, July 1981

This paper argues that between 1968 and 1979, due to indexation of exchange rates and wages, and because of monetary accommodation, the Brazilian inflation rate followed a random walk, while the real growth rate remained constant, except for uncorrelated shocks. ^{1/}

The indexation rule for wages was introduced in 1965, but Brazilian economists and policy makers agree that up to 1968, wages were less than fully indexed and at least real minimum wages fell during the years between 1965 and 1967. ^{2/} After 1968, not only the wage indexation rule was brought more closely to observed past inflation rates, but a minidevaluations scheme was introduced, according to which, the exchange rate was devalued at short intervals, taking into account the difference between domestic and foreign inflation rates. Only at the end of 1979, the system suffered a discontinuity, when the exchange rate was devalued by 30 percent.

Evidence for accommodation policy can be found in Cardoso (1977) and Contador (1978). Using Sims' causality test,

^{1/} Taylor (1979) has shown such properties for models with full monetary accommodation and overlapping wage contracts under rational expectations.

^{2/} See Macedo (1974).

they show that one cannot reject the hypothesis that money growth rates in Brazil respond to inflation rates.

Section 2 develops a model that permits to study the behavior of inflation and growth rates in an economy where wages are indexed to past inflation rates, purchasing power parity is guaranteed by a crawling peg, and where monetary authorities follow an accommodation rule. The paper concludes with the empirical evidence.

1. The model

The model consists of a standard Keynesian model, closed by a Phillips curve and a wage indexation rule. Variables are stated in growth rates. We assume output to be demand determined, and demand to depend on the real money stock and on the expected inflation rate. An increase in the real money stock reduces the nominal interest rate. Given the expected inflation rate, the expected real interest rate falls, stimulating demand. This is the Keynes-Hicks or liquidity effect. On the other hand, given the nominal interest rate, an increase in the expected inflation rate reduces the expected real interest rate and stimulates demand. This is known as the Mundell effect. Both effects are incorporated in the equation that describes output

as determined by demand: ^{3/}

$$(1) \quad y_t = a(m_t - p_t) + c(p_t^* - p_{t-1})$$

where: $y_t \equiv$ output growth rate in period t ; $m_t \equiv$ money growth rate; $p_t \equiv$ inflation rate and a star denotes its expected value.

^{3/} To obtain equation (1) consider the description of equilibrium in the money market and in the goods market given respectively by the LM and IS schedules: (I) $i = L^{-1}(M/PY)$ and (II) $Y = D(Y, i - p^*)$; where i denotes the nominal interest rate; $Y \equiv$ output level; $M/P \equiv$ the real money stock. Substituting (I) in (II) and log-differentiating, we obtain (1), where a and c depend on different elasticities.

In the open economy, demand for output equals domestic absorption plus the current account surplus, or net exports, NX :

$$(\hat{II}) \quad y = A(y, i - p^*) + NX(y, EP^f/P)$$

where EP^f/P is the real exchange rate and we assume that a real depreciation increases net exports. In this case, equation (1) should be written as:

$$(\hat{I}) \quad y_t = a(m_t - p_t) + b(e_t + p_t^f - p_t) + c(p_t^* - p_{t-1})$$

where: $e_t \equiv$ the depreciation rate of the nominal exchange rate; $p_t^f \equiv$ foreign inflation rate; and a , b and c depend on different elasticities, and on the share of domestic and foreign demand in total demand for the domestic output.

Assuming that the exchange rate is indexed to the difference between domestic and foreign inflation rates, we obtain the expression for equation (1), as it appears in the text.

The monetary authorities follow the rule:

$$(2) \quad m_t = \bar{m} + g p_t^* \quad ; \quad 0 < g < 1$$

where g is the accommodation parameter.

Substituting (2) in (1) and assuming perfect foresight, we obtain:

$$(1) \quad y_t = a\bar{m} + [c - a(1-g)] p_t - c p_{t-1}$$

Equation (1), or aggregate demand, is represented in figure 1 as the upward sloping schedule AA. We assume both the accommodation parameter and the Mundell effect to be large enough to guarantee that $c > a(1-g)$. Consider a point along AA, at which output equals demand. Suppose that the inflation rate increases. On one hand, the increase in the inflation rate reduces the real interest rate; on the other, it decreases the real money stock increasing the nominal interest rate and thus the real interest rate. Since the monetary policy in part accommodates the price acceleration, the effect on the nominal interest rate is reduced. As the Mundell effect predominates over the liquidity effect, the rise in the inflation rate induces an increase in the demand for output. Equilibrium would require a higher output growth rate. Also observe that AA was drawn for a given past inflation rate. As the inflation rate evolves, AA will be shifting. Dynamics are discussed below.

We now turn to the supply side. Assuming that prices

are cost determined, the inflation rate equals the wage inflation rate, w : ^{4/}

$$(3) \quad p_t = w_t$$

The wage inflation is assumed to depend on two factors: on the state of the labor market and on the indexation rule, that establishes that wage rates must rise in proportion with the increase in prices one period before:

$$(4) \quad w_t = -hu_t + p_{t-1} \quad ; \quad h > 0$$

The unemployment rate increases whenever output growth falls below trend growth, \bar{y} :

^{4/} In the open economy, total costs must also include the costs with imported intermediates. The inflation rate would thus be written as: $(\hat{3}) \quad p_t = n w_t + v p_t^o$; where n and v represent the shares of wages and imported intermediates in total costs.

The inflation rate of domestic prices of imported intermediates is: $p_t^o = e_t + s_t + p_t^{of}$; where: s_t is the rate of change of subsidies to imported intermediates and p_t^{of} is the dollar inflation rate of prices of imported intermediates. Assuming that increases in the prices of imported intermediates are washed out by subsidies, $s_t = -(e_t + p_t^{of})$, we obtain equation (3), where the constant n was made equal to one. Evidence shows that domestic prices of imported intermediates in Brazil were in part subsidized by the government and did not follow the international prices.

$$(5) \quad u_t - u_{t-1} = -k(y_t - \bar{y}) \quad ; \quad k > 0$$

Using (3), (4) and (5), we can write:

$$(3') \quad p_t = hk(y_t - \bar{y}) + 2p_{t-1} - p_{t-2}$$

Equation (3'), or the short run supply schedule, is represented by SS in figure 1. Also observe that SS was drawn for given past inflation rates. As the inflation rate evolves, SS will be shifting.

In the steady state, the output growth rate equals trend growth, \bar{y} , and the inflation rate is constant. To the right of \bar{y} , in figure 1, prices are accelerating and inversely to its left. On the other hand, output growth is constant only if inflation equals its trend level \bar{p} . Above \bar{p} , output is accelerating and inversely below it.

Point E represents a saddle point equilibrium. The perfect foresight path FF is: ^{5/}

$$(6) \quad p_t = \lambda(y_t - \bar{y}) + \bar{p}$$

where: $\bar{p} \equiv (a\bar{m} - \bar{y}) / [a(1-g)]$

$$\lambda \equiv \left[q / (\theta q - c) \right] \quad ; \quad \lambda < 0 \quad ; \quad |\lambda| > 1$$

$$\theta \equiv c - a(1-g) \quad ; \quad \theta > 0$$

$$q \equiv \left[(2-hkc) / 2(\theta hk - 1) \right] + \left\{ \left[(2-hkc) / (\theta hk - 1) \right]^2 + \left[1 / (\theta hk - 1) \right] \right\}^{(1/2)} \quad ; \quad 0 < q < 1$$

^{5/} The perfect foresight path is derived in Appendix 1.

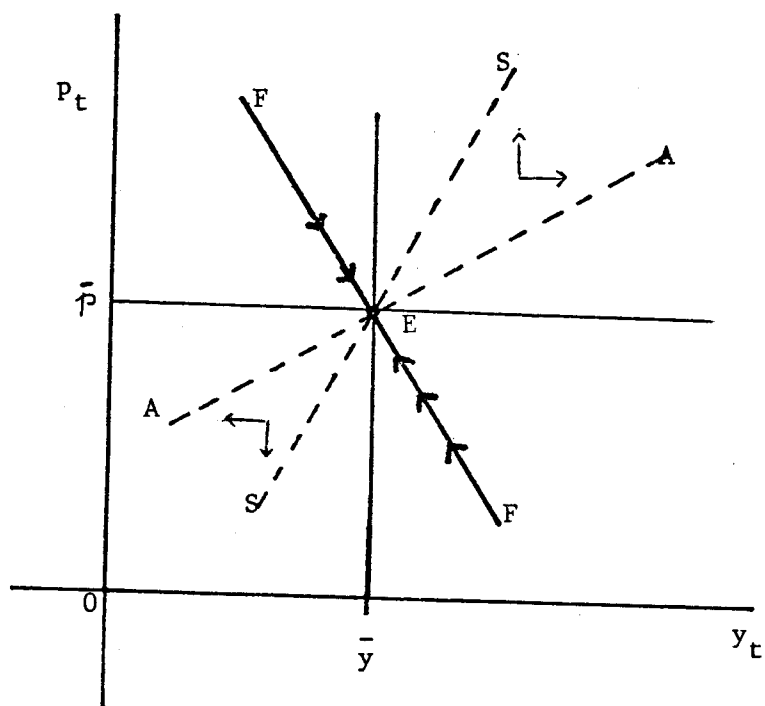


Figure 1.

Observe that the more accommodating the monetary policy, the higher trend inflation, \bar{p} . Also observe that $g=1$ implies $\theta=c$, $q=1$, $\lim_{q \rightarrow 1} \lambda \rightarrow \infty$ and $\lim_{q \rightarrow 1} \bar{p} \rightarrow \infty$

2.1. Disinflation

Next we turn to some exercises on comparative dynamics.

To study a disinflation process, we look at an economy in steady state, where both growth and inflation rates equal their trend values, as represented by point E in figure 2. Trend inflation is very high and therefore the monetary authorities reduce money growth by decreasing \bar{m} . Since wages are indexed, current inflation equals last period inflation and the reduction in money growth is translated into a reduction in the growth of real cash balances, increasing the nominal and the real interest rate. The impact of the new monetary policy is a reduction in output growth rate below trend while inflation is left unchanged. Next period we face an increase in the rate of unemployment and wage inflation falls below the inflation rate of the previous period, inducing a fall in the current inflation rate. This

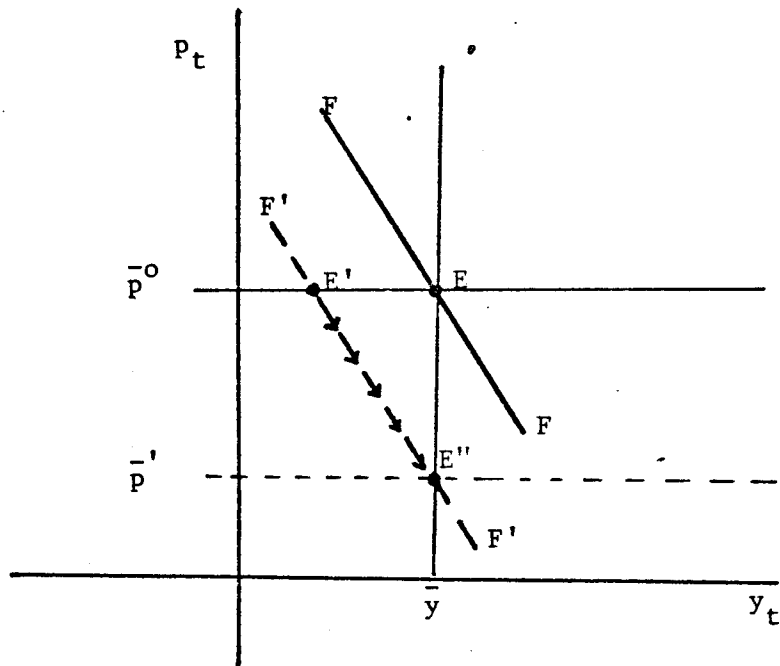


Figure 2.

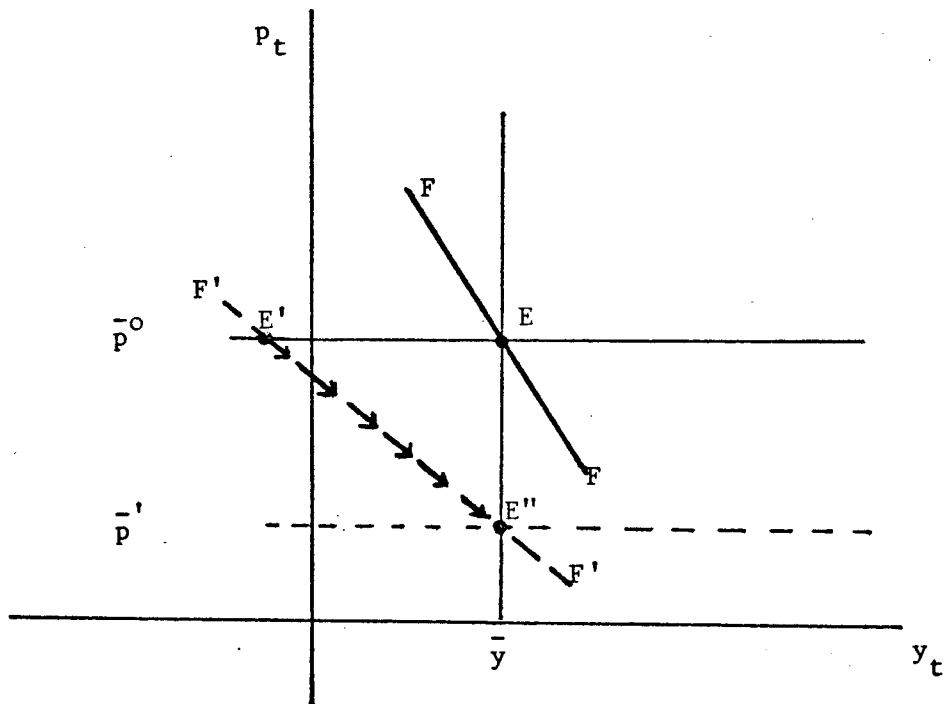


Figure 3.

would permit real liquidity to recover, interest rates to fall and income growth to improve again, moving the economy to point E" in figure 2.

Observe that the vertical shift of the perfect foresight path in figure 2 equals $d\bar{p} = (1/(1-g))d\bar{m}$, and the speed of adjustment from the old to the new equilibrium is given by $(1-q)/q$. The speed of adjustment is faster, the less accommodating the monetary policy. If the parameter of accommodation is close to one, the recession that will bring about disinflation, will have to last for many periods. Assume that the monetary authorities decide to fasten the disinflation process by changing the accommodation rule, and decreasing g . What will happen is that, although the adjustment period might last for a shorter time, the recession during the initial periods will be much more severe than under the first program. This is illustrated in figure 3, where the decrease in both \bar{m} and g shifts and rotates the perfect foresight path to the left.

2.2 An adverse productivity shock

Figure 4 illustrates the effects of an adverse productivity shock that reduces trend growth. For an unchanged monetary policy, the new trend inflation will also be higher.

Assume money growth was reduced in proportion with the fall in money demand induced by the fall in output. If this was the case, the economy would move to B, where we observe the

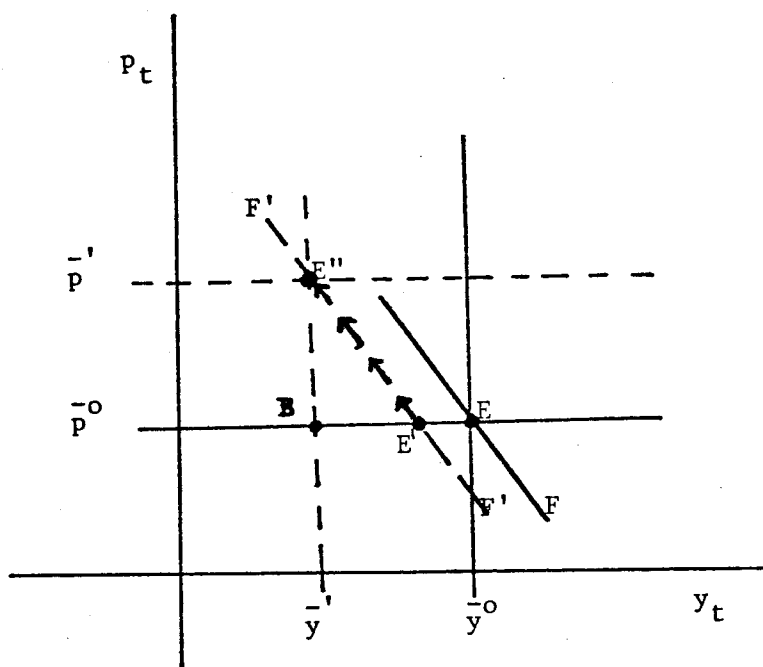


Figure 4.

same inflation rate as before, and output growth has fallen to its new lower trend level.

Assume money growth is left unchanged. In this case, the fall in output growth in the current period would be less than the fall we will observe in the long run. The decrease in output growth rates reduces the growth of money demand in relation to money supply inducing a fall in interest rates. Output growth rates consistent with the level of demand can only be obtained through overemployment, given the fall in productivity. Overemployment induces nominal wage rates and prices to accelerate, reducing liquidity, increasing interest rates and reducing the level of activity till the economy sets down at the new lower trend growth and higher inflation rates, illustrated by point E" in figure 4.

2. The Empirical Evidence

Now that we understand how the model works, we look back to the expressions of aggregate demand and supply. The complete solution of the system formed by the two difference equations (1') and (3') is:

$$(7) \quad p_t = (p_{t_0} - \bar{p})q^t + \bar{p}$$

$$(8) \quad y_t = (1/\lambda)(p_{t_0} - \bar{p})q^t + \bar{y}$$

By subtracting p_{t-1} from equation (7) and admitting the possibility of unanticipated shocks we can write:

$$(9) \quad p_t = (1-q)\bar{p} + q p_{t-1} + \epsilon_t$$

If there is full accommodation ($q=1$) the inflation rate is a random walk:

$$(10) \quad p_t = p_{t-1} + \epsilon_t$$

On the other hand, full accommodation also implies that $\lim_{q \rightarrow 1} \lambda \rightarrow \infty$, and thus, from (8), admitting the possibility of random shocks, we obtain:

$$(11) \quad y_t = \bar{y} + \eta_t$$

We now want to examine the empirical evidence for the period 1968-1979, in Brazil, when both wages and the exchange rate were nearly fully indexed to the inflation rate.

Table 1 reports the results of the regressions for the inflation rate.

TABLE 1

The inflation rate: 1968/79

$$\hat{p}_t = \alpha_0 + \alpha_1 p_{t-1}$$

	α_0	α_1	R^2	D.W.	S.E.R.	Number of Observations
General Price Index (annual data)	0.013 (0.071) (0.189)	1.029 (0.250) (4.120)	0.63	2.08	0.078	12
General Price Index (Quarterly data)	0.009 (0.008) (1.122)	0.914 (0.110) (8.298)	0.60	1.87	0.022	48
Consumer Prices (annual data)	0.030 (0.073) (0.412)	0.958 (0.251) (3.818)	0.59	1.84	0.082	12
Consumer Prices (Quarterly data)	0.009 (0.007) (1.344)	0.903 (0.097) (9.341)	0.66	1.96	0.019	48

Note: The equations were estimated by ordinary least squares. Standard errors and t-statistics appear in parentheses. The first two equations use the inflation rate of the general price index, column 2, in Conjuntura Econômica (C.E.). The last two equations use the inflation rate of consumer prices, column 6 in C.E. (or line 64 in IMF, International Financial Statistics, (IFS)). The equation for annual data was also run using the inflation rate of wholesale prices, column 3 in C.E. (or line 63 in IFS). Results thus obtained do not differ from those in table 1.

According to results in table 1, one cannot reject the hypothesis that the intercept of equation (10) is zero and that the coefficient of the lagged inflation rate is one. The Durbin-Watson statistic, in all equations in table 1, is close to 2, and thus one cannot reject the hypothesis that the errors are (first order) serially uncorrelated. Reported in table 2 are the results of testing the joint restriction that the constant term is zero and that the coefficient of the lagged inflation rate is one. The relevant statistic for testing the null hypothesis is an F-statistic obtained from the regression $P_t - P_{t-1} = \gamma_0 + \gamma_1 P_{t-1}$. The results show that the F-statistics fall well below the critical values corresponding to the 95 and 99 percent confidence level. In all cases the null hypothesis cannot be rejected and it is concluded therefore that the inflation rate followed a random walk without trend in the period 1968-79.

We turn now to the evidence on the real growth rate, which is shown in Table 3. Using annual data, one cannot reject the hypothesis that yearly output growth rates remained constant at the trend value, except for white noise. This is not true though for quarterly output growth rates. Using quarterly data, the estimate for the coefficient of the lagged quarterly output growth rate is different from zero and smaller than one in absolute value. It is also negative, indicating that convergence is oscillatory, and its size implies that adjustment to a random shock takes on average three quarters and a half.

Table 2

$$P_t - P_{t-1} = \gamma_0 + \gamma_1 P_{t-1}$$

Dependent variable $P_t - P_{t-1}$	Null hypothesis	F-statistic
1. General price index annual data	$\gamma_0 = \gamma_1 = 0$.014
2. General price index quarterly data	$\gamma_0 = \gamma_1 = 0$.608
3. Consumer prices annual data	$\gamma_0 = \gamma_1 = 0$.028
4. Consumer prices quarterly data	$\gamma_0 = \gamma_1 = 0$.999

Note: The F-statistic is distributed as F (1,10) in equations 1. and 3. ; and as F (1, 46) in equations 2. and 4. Critical values for F (1, 10) are 4.96 (95 percent) and 10.0 (99 percent). Critical values for F (1,46) are 4.1 (95 percent) and 7.3 (99 percent).

Table 3

Real GDP growth rates: 1968/79

$$(11): \hat{y}_t = \alpha_0 + \alpha_1 y_{t-1}$$

	α_0	α_1	D1	D2	D3	R ²	D.W.	SER	Number of observations
annual data	0.061 (0.027) (2.280)	0.341 (0.280) (1.217)				0.13	1.65	.03	12
quarterly data	0.044 (0.008) (5.246)	-0.365 (0.141) (-2.581)	-0.064 (0.010) (-6.293)	0.007 (0.013) (0.509)	0.008 (0.011) (0.747)	0.68	1.90	.02	48

Note: D1, D2 and D3 are seasonal dummies.

Equations were estimated by ordinary least squares. Standard-errors and t-statistics appear in parentheses. Annual data for GDP growth rates was obtained in C.E., various issues. The quarterly data comes from Cardoso (1981), Table A.

Conclusions:

Using a Keynesian macro model, closed by monetary accommodation and indexation rules, this paper has argued that Brazilian inflation rate followed a random walk between 1968 and 1979, while annual growth rates were kept roughly constant. The model presented in section 2 helps to understand why observed inflation and growth rates in Brazil are negatively correlated (for an unchanged policy, inflation and growth rates lie on a downward sloping perfect foresight path).

The empirical evidence in section 3 permits to understand why economists have found it difficult to detect the effect of cyclical components in price equations for Brazil when using yearly data.

Appendix 1

This appendix solves the system formed by equations (1') and (3'):

$$(1') \quad y_t = a\bar{m} + \theta p_t - cp_{t-1}$$

where $\theta \equiv c-a(1-g) > 0$

$$(3') \quad p_t = hk(y_t - \bar{y}) + 2p_{t-1} - p_{t-2}$$

We define: $x_t \equiv p_{t-1}$, implying $p_{t-2} \equiv x_{t-1}$. Next we re-write the system above to which, we add the equation:

$x_t = p_{t-1}$, in matrix form:

$$\begin{bmatrix} 1 & -\theta & c \\ -hk & 1 & -2 \\ 0 & 0 & 1 \end{bmatrix} \begin{bmatrix} y_t \\ p_t \\ x_t \end{bmatrix} + \begin{bmatrix} 0 & 0 & 0 \\ 0 & 0 & 1 \\ 0 & -1 & 0 \end{bmatrix} \begin{bmatrix} y_{t-1} \\ p_{t-1} \\ x_{t-1} \end{bmatrix} = \begin{bmatrix} a\bar{m} \\ -hk\bar{y} \\ 0 \end{bmatrix}$$

Looking for the particular integrals, we find:

$$\begin{bmatrix} \bar{y} \\ \bar{p} \\ \bar{x} \end{bmatrix} = \frac{1}{\bar{\Delta}} \begin{bmatrix} 0 & \theta-c & \theta-c \\ hk & 1 & 1-hkc \\ hk & 1 & 1+hk\theta \end{bmatrix} \begin{bmatrix} a\bar{m} \\ -hk\bar{y} \\ 0 \end{bmatrix} = \begin{bmatrix} \bar{y} \\ (a\bar{m}-\bar{y})/a(1-g) \\ (a\bar{m}-\bar{y})/a(1-g) \end{bmatrix}$$

where: $\bar{\Delta} \equiv hka(1-g)$

$\theta-c \equiv a(1-g)$

To find the complementary functions we calculate the characteristics roots:

$$\Delta = q \left(q^2 + \frac{(hkc - 2)}{(1 - hk\theta)} q + \frac{1}{(1 - hk\theta)} \right) = 0$$

The conditions for a non-oscillatory convergent path to equilibrium are:

$$\theta hk > 1$$

$$hkc < 2$$

And the stable root is:

$$q = - \frac{(2 - hkc)}{2 (\theta hk - 1)} + \left[\frac{(2 - hkc)^2}{4 (\theta hk - 1)^2} + \frac{1}{(\theta hk - 1)} \right]^{1/2}$$

It can be shown that if there is full accommodation, $g=1$, which implies $q=1$.

Choosing the initial conditions as to rule out the

non-stable root, the solution for the homogeneous part of the system is:

$$p_t = A_o q^t$$

$$y_t = (1/\lambda)A_o q^t$$

where $\lambda \equiv (\theta q - c)/q$

Adding the particular integrals we come to:

$$(i) \quad p_t = (p_{t_o} - \bar{p}) q^t + \bar{p}$$

$$(ii) \quad y_t = (1/\lambda)(p_{t_o} - \bar{p}) q^t + \bar{y}$$

From equations (i) and (ii) we obtain the perfect foresight path:

$$p_t = \lambda (y_t - \bar{y}) + \bar{p}$$

References

- Cardoso, E. (1977) "Moeda, Renda e Inflação: Algumas Evidências da Economia Brasileira", Pesquisa e Planejamento Econômico 7(2), pp. 475/504.
- Cardoso, E. (1981) "A money demand equation for Brazil", CLADS Discussion Paper, Boston University.
- Contador, Claudio (1978), " A Exogeneidade da Oferta de Moeda no Brasil", Pesquisa e Planejamento Econômico, 8(2), pp.475/504.
- Macedo, Roberto (1974), "A Critical Review of the Relation Between the Post-64 Wage Policy and the Worsening of Brazil's Income Distribution in the Sixties", Explorations in Economic Research, 1, pp. 117/40.
- Taylor, John (1979), "Staggered Wage Setting in a Macro Model", American Economic Review, Papers and Proceedings, pp. 108-113.

PUBLISHING DEPARTMENT

Coordination

Cláudio Passos de Oliveira

Supervision

Everson da Silva Moura
Reginaldo da Silva Domingos

Typesetting

Bernar José Vieira
Cristiano Ferreira de Araújo
Daniella Silva Nogueira
Danilo Leite de Macedo Tavares
Diego André Souza Santos
Jeovah Herculano Szervinsk Junior
Leonardo Hideki Higa

Cover design

Luís Cláudio Cardoso da Silva

Graphic design

Renato Rodrigues Buenos

*The manuscripts in languages other than Portuguese
published herein have not been proofread.*

Ipea Bookstore

SBS – Quadra 1 – Bloco J – Ed. BNDES, Térreo
70076-900 – Brasília – DF
Brazil
Tel.: + 55 (61) 3315 5336
E-mail: livraria@ipea.gov.br

Ipea's mission

Enhance public policies that are essential to Brazilian development by producing and disseminating knowledge and by advising the state in its strategic decisions.

Secretariat of

Secretariat of



ipea Institute for Applied
Economic Research

Secretariat of
Strategic Affairs

